

walker laird

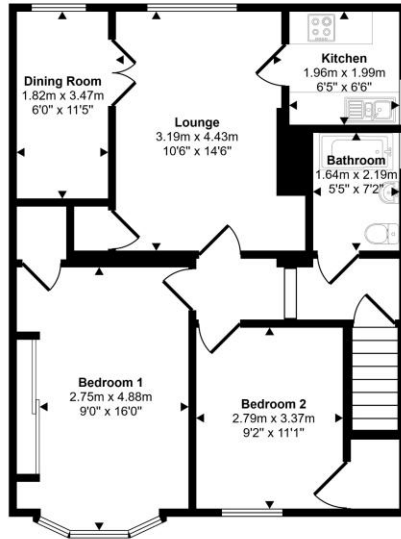
solicitors and estate agents



506 Castlemilk Road, Glasgow,
G44 5PS

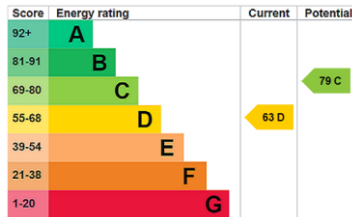
walkerlaird.co.uk

Approx Gross Internal Area
67 sq m / 720 sq ft



Floorplan

This floorplan is only for illustrative purposes and is not to scale. Measurements of rooms, doors, windows, and any items are approximate and no responsibility is taken for any error, omission or mis-statement. Icons of items such as bathroom suites are representations only and may not look like the real items. Made with Made Snappy 360.



This traditional upper cottage flat is located close to amenities on Castlemilk Road. The two bedroom home is well presented and is positioned within mature gardens.

The accommodation comprises: vestibule; hallway; spacious rear facing living room; dining room/third bedroom; kitchen featuring wall and base units, an oven, electric hob and extractor hood; two double bedrooms; and a tiled bathroom complete with a white suite, vanity storage and an electric shower.

The property is presented in neutral and fresh tones. The specification includes: gas central heating and double glazing.

There is a garden space which is fenced off to the rear.

Castlemilk Road benefits from a variety of local amenities including excellent public transport provision, supermarkets, leisure activities including Kings Park, restaurants and bars. There is schooling to both primary and secondary levels. The area is well served for easy access to the M74 motorway providing quick travel to Glasgow City Centre.



VIEWING

Strictly by appointment with selling agents, by calling

OFFERS

All offers should be submitted to:
10 Canal Street, Renfrew, PA4 8QD
Telephone: 0141 886 5678 Fax: 0141 886 7327

walker laird

solicitors and estate agents

Paisley

9 Gilmour Street, Paisley, Renfrewshire, PA1 1DG

paisleyea@walkerlaird.co.uk

walkerlaird.co.uk

Disclaimer - IMPORTANT: We would like to inform prospective purchasers that these sales particulars have been prepared as a general guide only. Whilst every precaution has been taken to ensure accuracy, if there is any aspect which is critical to your interest or which you find misleading please contact us for further information. A detailed survey has not been carried out, nor the services, appliances and fittings tested. Room sizes are taken with a laser tape measure, should not be relied upon for furnishing purposes and are approximate. Floor plans are for guidance only and illustration purposes only and may not be to scale.